

UBE2D1 Antibody (monoclonal) (M01)**Mouse monoclonal antibody raised against a partial recombinant UBE2D1.****Catalog # AT4431a****Specification**

UBE2D1 Antibody (monoclonal) (M01) - Product Information

Application	WB, IHC, E
Primary Accession	P51668
Other Accession	NM_003338
Reactivity	Human
Host	mouse
Clonality	Monoclonal
Isotype	IgG2a Kappa
Calculated MW	16602

UBE2D1 Antibody (monoclonal) (M01) - Additional Information**Gene ID** 7321**Other Names**

Ubiquitin-conjugating enzyme E2 D1, Stimulator of Fe transport, SFT, UBC4/5 homolog, UbcH5, Ubiquitin carrier protein D1, Ubiquitin-conjugating enzyme E2(17)KB 1, Ubiquitin-conjugating enzyme E2-17 kDa 1, Ubiquitin-protein ligase D1, UBE2D1, SFT, UBC5A, UBCH5, UBCH5A

Target/Specificity

UBE2D1 (NP_003329, 1 a.a. ~ 94 a.a) partial recombinant protein with GST tag. MW of the GST tag alone is 26 kDa.

Dilution

WB~~1:500~1000

IHC~~1:100~500

E~~N/A

Format

Clear, colorless solution in phosphate buffered saline, pH 7.2 .

Storage

Store at -20°C or lower. Aliquot to avoid repeated freezing and thawing.

Precautions

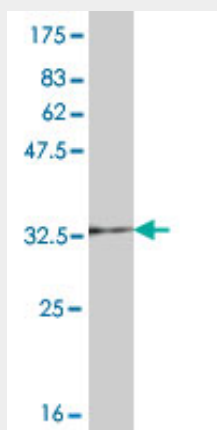
UBE2D1 Antibody (monoclonal) (M01) is for research use only and not for use in diagnostic or therapeutic procedures.

UBE2D1 Antibody (monoclonal) (M01) - Protocols

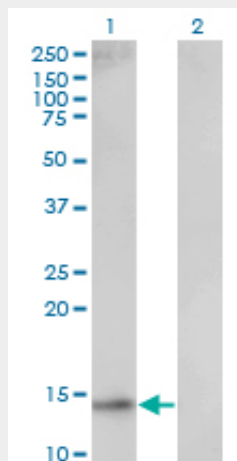
Provided below are standard protocols that you may find useful for product applications.

- [Western Blot](#)
- [Blocking Peptides](#)
- [Dot Blot](#)
- [Immunohistochemistry](#)
- [Immunofluorescence](#)
- [Immunoprecipitation](#)
- [Flow Cytometry](#)
- [Cell Culture](#)

UBE2D1 Antibody (monoclonal) (M01) - Images



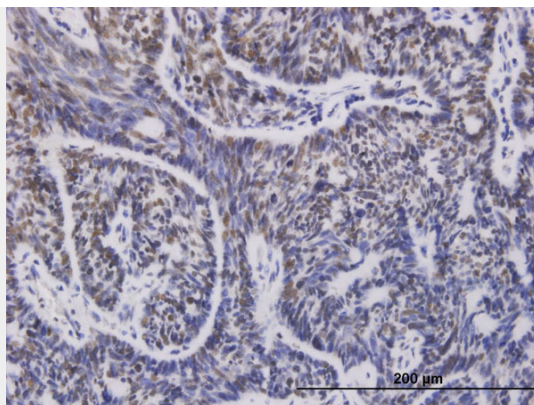
Antibody Reactive Against Recombinant Protein. Western Blot detection against Immunogen (36.08 KDa) .



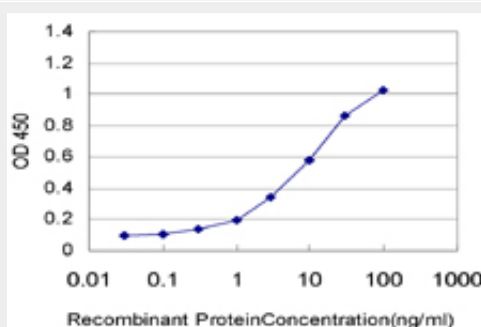
Western Blot analysis of UBE2D1 expression in transfected 293T cell line by UBE2D1 monoclonal antibody (M01), clone 2C6.

Lane 1: UBE2D1 transfected lysate(16.6 KDa).

Lane 2: Non-transfected lysate.



Immunoperoxidase of monoclonal antibody to UBE2D1 on formalin-fixed paraffin-embedded human cervix cancer. [antibody concentration 1 ug/ml]



Detection limit for recombinant GST tagged UBE2D1 is approximately 0.3 ng/ml as a capture antibody.

UBE2D1 Antibody (monoclonal) (M01) - Background

The modification of proteins with ubiquitin is an important cellular mechanism for targeting abnormal or short-lived proteins for degradation. Ubiquitination involves at least three classes of enzymes: ubiquitin-activating enzymes, or E1s, ubiquitin-conjugating enzymes, or E2s, and ubiquitin-protein ligases, or E3s. This gene encodes a member of the E2 ubiquitin-conjugating enzyme family. This enzyme is closely related to a stimulator of iron transport (SFT), and is up-regulated in hereditary hemochromatosis. It also functions in the ubiquitination of the tumor-suppressor protein p53 and the hypoxia-inducible transcription factor HIF1alpha by interacting with the E1 ubiquitin-activating enzyme and the E3 ubiquitin-protein ligases.

UBE2D1 Antibody (monoclonal) (M01) - References

1. The stability of HSV-1 ICP0 early after infection is defined by the RING finger and the UL13 protein kinase. Zhu Z, Du T, Zhou G, Roizman BJ Virol. 2014 Feb 26.